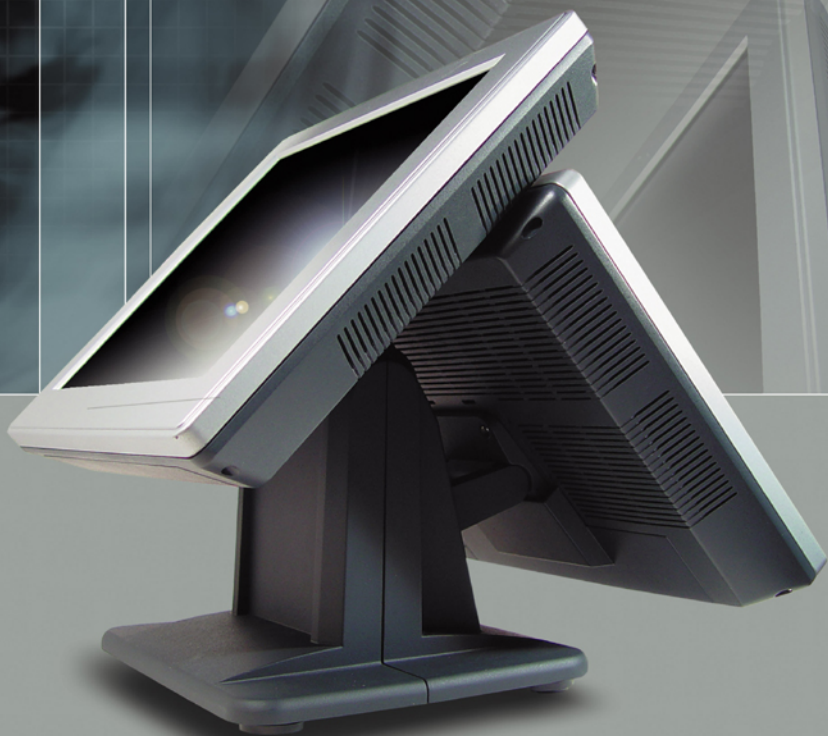
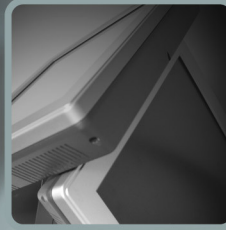


*The best  
Touch Solution*





## TM Series - Touch LCD Monitor

MODEL	TM-140	TM-150	TM-170
<b>Specification</b>			
<b>Display Type</b>	Active Matrix TFT LCD		
<b>LCD Size</b>	14"	15"	17"
<b>Display Area (mm)</b>	285 (W) x 214 (H)	304 (W) x 228 (H)	338 (W) x 270 (H)
<b>Max. Resolution</b>	1024 x 768	1024 x 768	1280 x 1024
<b>Colors</b>	16.7 million		
<b>Brightness</b>	150~ cd/m <sup>2</sup> (Typ.)	250~ cd/m <sup>2</sup> (Typ.)	250~ cd/m <sup>2</sup> (Typ.)
<b>Contrast Ratio</b>	300 : 1	300 : 1	450 : 1
<b>Input Connector</b>	D-SUB 15 PIN Female / 24 PIN DVI		
<b>Power Supply</b>	12V External Power Adapter		
	2A	2A	3A
<b>Color</b>	Dark Gray with Silver Front Panel		
<b>Dimension (W x H x D)</b>	378x 348x 226mm	378x 348x 226mm	418x 378x 226mm
<b>Temperature</b>	Operation : 0°C to 40°C		
<b>Humidity</b>	10% to 90%		
<b>Touch Panel</b>	TW 5-wire or ELO Resistive Touch Panel (RS-232 or USB)		
<b>Optional Device</b>	VFD Customer Display, MSR Card Reader Second 14" /15" /17" LCD Screen with or without Touch Screen		

- Brightness is measured under the touch panel is not equipped.
- Please note that different touch panel will have different influence on brightness.