

Printing a Logo on a Samsung Bixolon Thermal Printer

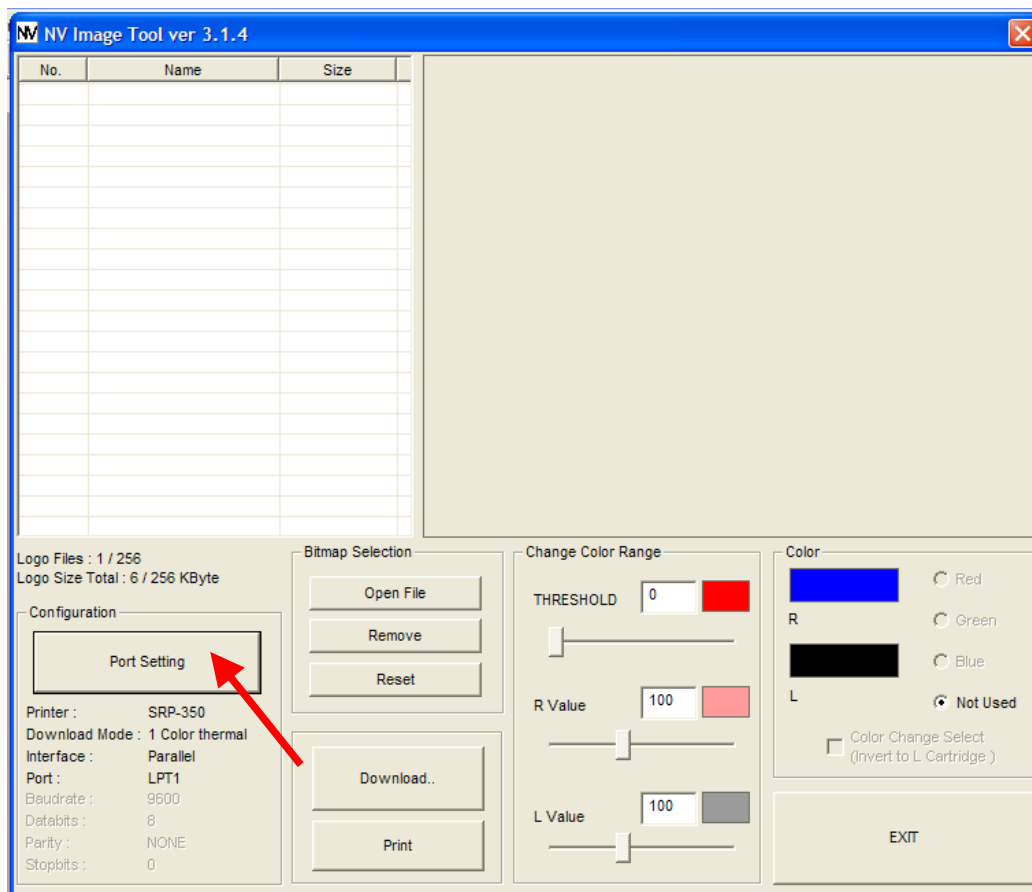
Step 1) Download the current NV Image Tool software from the Samsung website (version 3.8 and above)

Step 2) Install NV Image Tool onto your computer along with the driver printer for your printer.

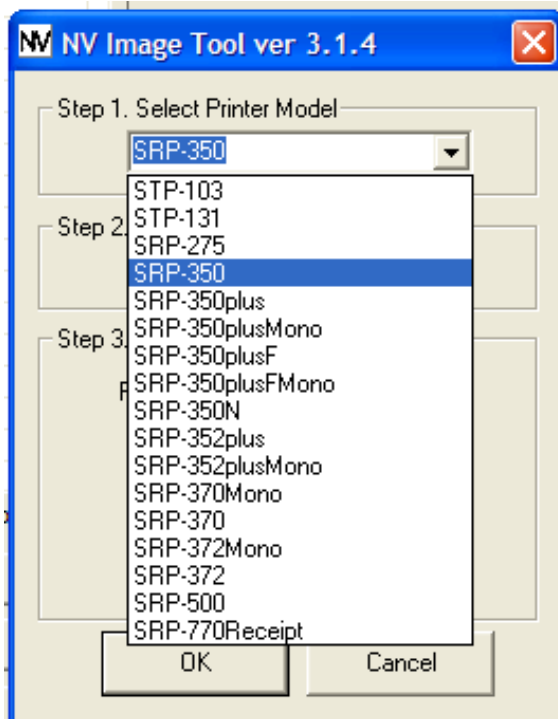
Step 3) Create a Bitmap (bmp) logo you would like the printer to print.

Step 4) Open the NV Image tool program

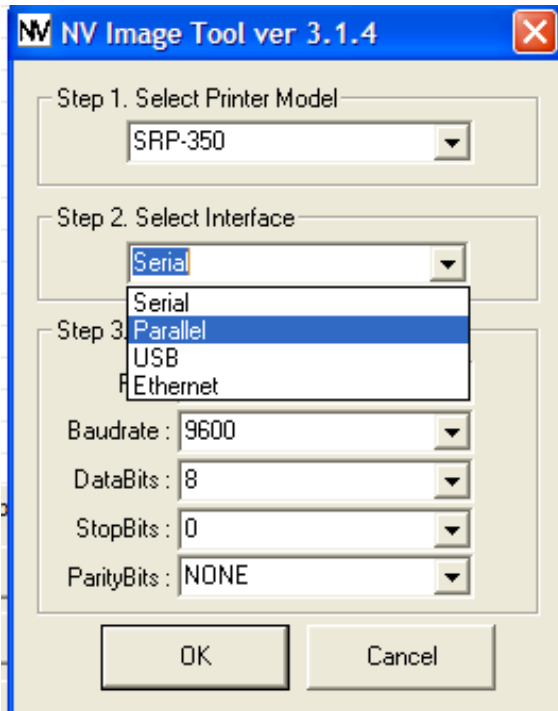
Step 5) Click on the “Port Setting” button



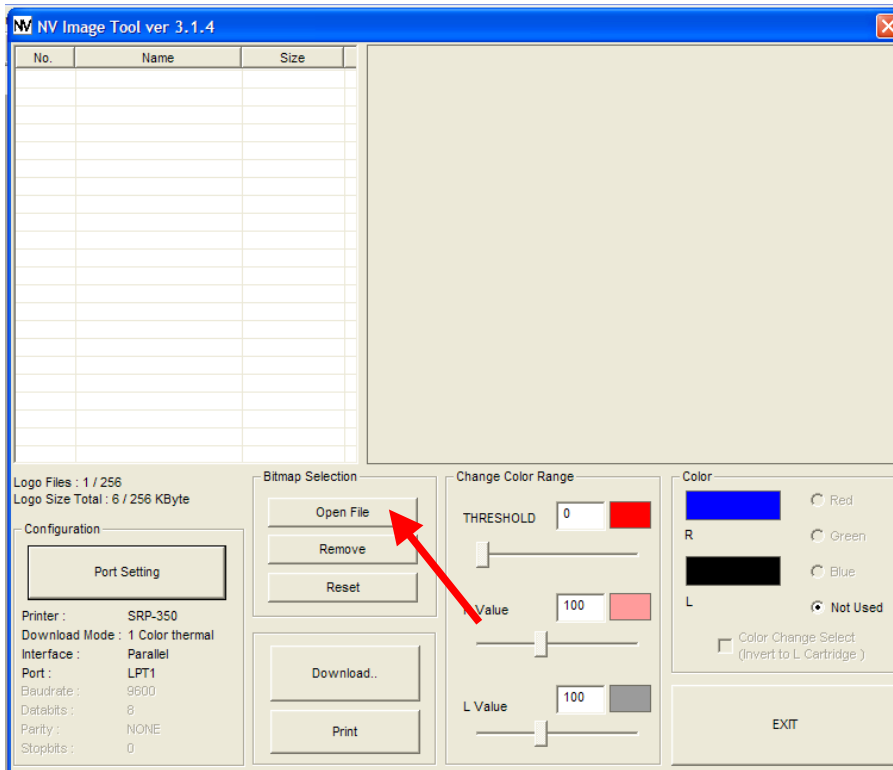
Step 6) Click the down arrow in the “Select Printer Model” option and select the model of the printer you are using



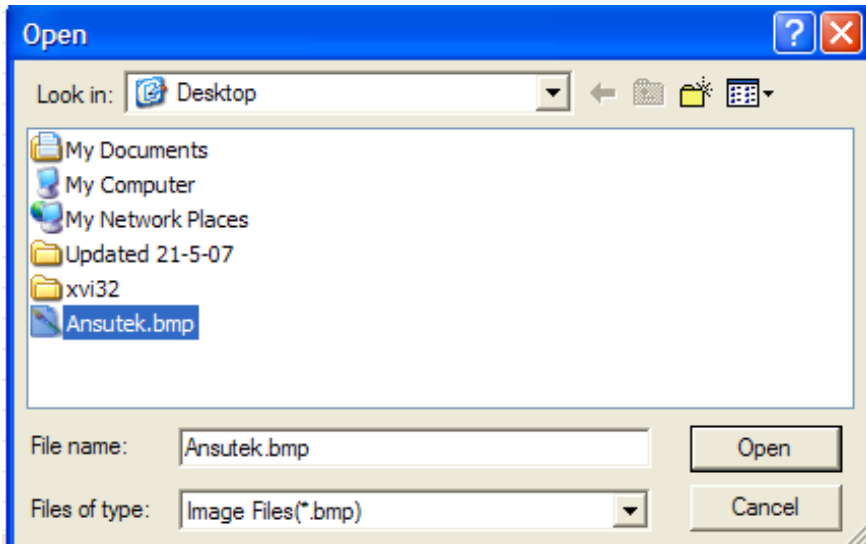
Step 7) Click the *down arrow* on the “Select Interface” Option and select Serial, Change the port configuration to Port Com1, Baudrate 9600, DataBits 8, StopBits 1 and ParityBits NONE.



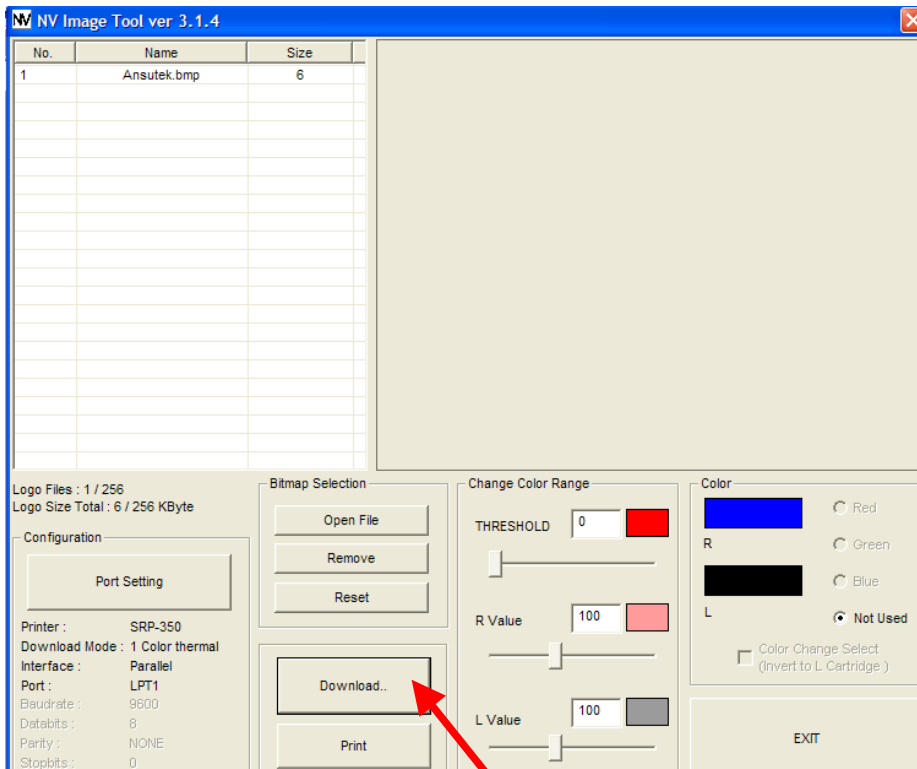
Step 8) Click the “Open File” button.



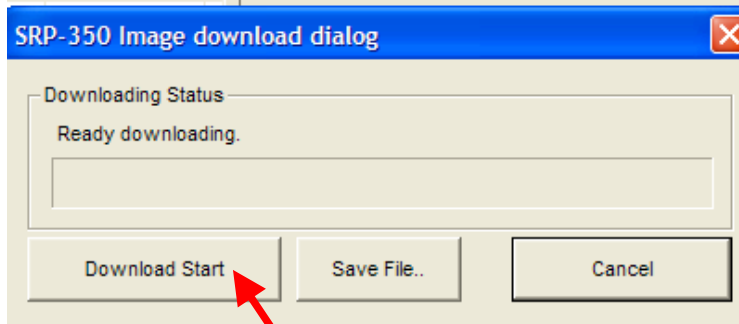
Step 9) Browse to the bitmap (bmp) image you created in step 2, select the image and click the “Open” button



Step 10) Click the “Download Button”

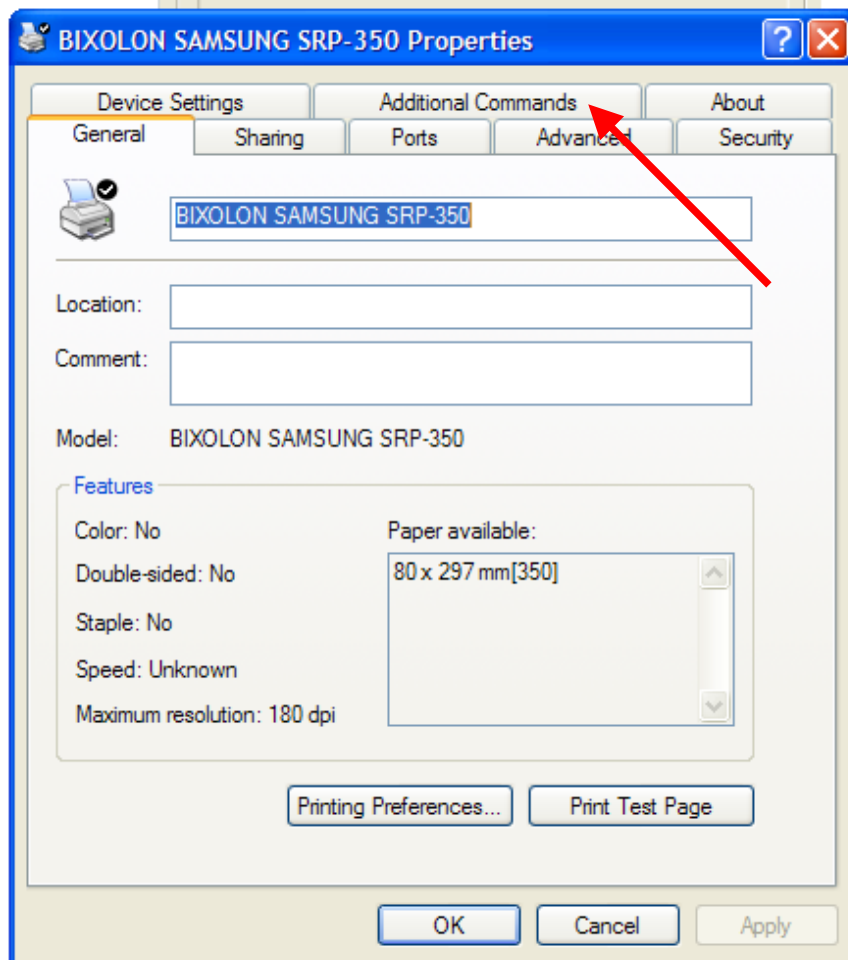


Step 11) Click the “Start Download” button



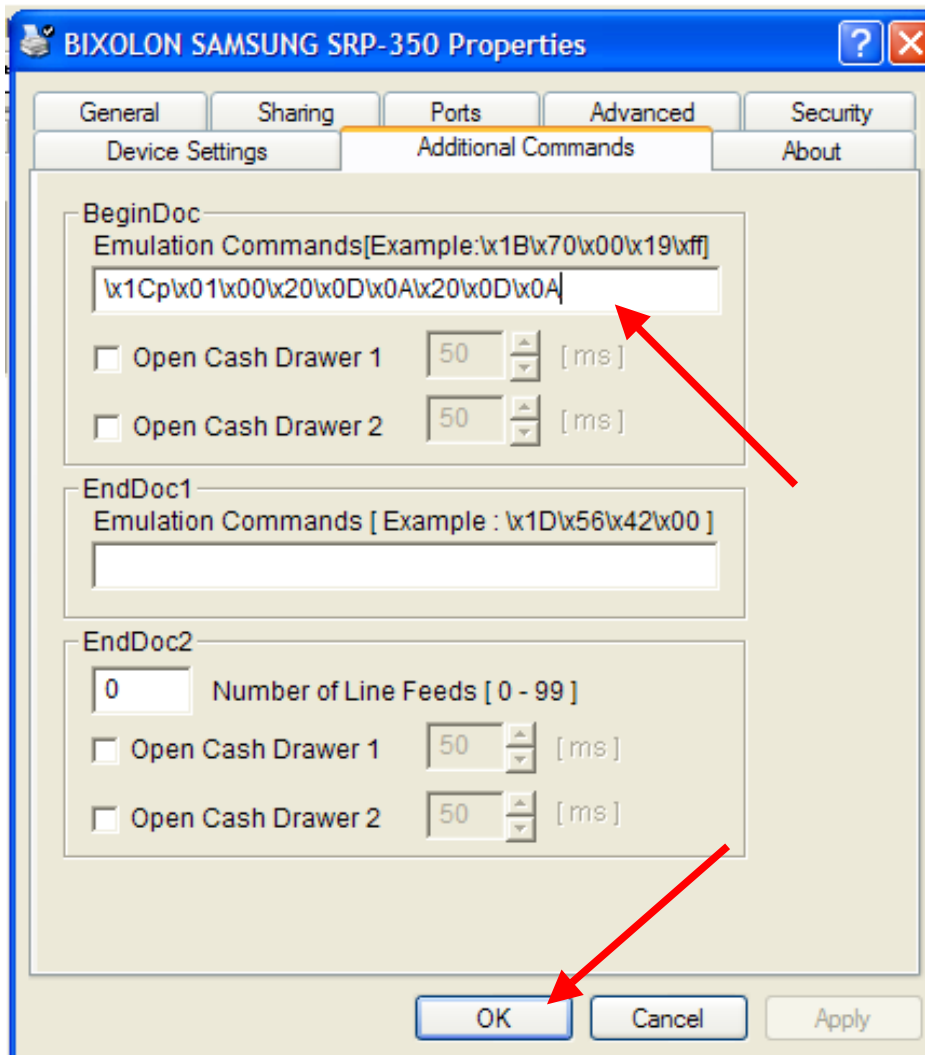
Note: Once steps 1 to 11 has been completed, the printer will have an image stored in it's memory.

Step 12) Go to the printers properties and select the “Additional Commands” tab



Step 13) Type into the Begin Doc – Emulation Command field to values below and click the “OK” button:

“\x1Cp\x01\x00\x20\x0D\x0A\x20\x0D\x0A”



Note: Your printer will now print a logo on the top of the receipt when a receipt is printed.